

ERECTOR

ERECTOR BY Q 9MM MODULAR SILENCER

Rev 1.5

SPECS:

CALIBER	9MM	LENGTH	8.7 IN
MOUNT	PISTON 1/2-28	WEIGHT	8 OZ
MATERIAL	7075-T6 ALUMINUM 17-4 STAINLESS-STEEL	DIAMETER	1.38 IN

DISCLAIMERS:

⚠ BEFORE USING THIS SILENCER: BE CERTAIN YOU HAVE READ AND UNDERSTAND THIS MANUAL AND THE ACCOMPANYING "FINE PRINT" SHEET. FAILURE TO DO SO CAN RESULT IN PROPERTY DAMAGE, SERIOUS INJURY AND/OR DEATH. USE EXTREME CARE AND CAUTION WHEN HANDLING ANY FIREARM AND SILENCER.

⚠ THE ERECTOR IS FOR USE WITH 9MM AND SMALLER PISTOL CALIBERS ONLY.

⚠ THE ERECTOR IS NOT RIFLE CALIBER RATED.

⚠ ONLY USE CERTIFIED SAAMI / C.I.P. APPROVED AMMUNITION WITH THIS SILENCER.

CLEANING AND MAINTENANCE:

Q RECOMMENDS CLEANING THE ERECTOR EVERY 500 ROUNDS.

⚠ AS WITH ALL FIREARMS CLEANING AND MAINTENANCE, ALWAYS WEAR PROPER PERSONAL PROTECTIVE EQUIPMENT.

⚠ DO NOT USE METAL TOOLS TO CLEAN ALUMINUM PARTS.

⚠ USE AN ALUMINUM SAFE SOLUTION IF YOU INTEND TO USE AN ULTRASONIC CLEANER..

1. USING AN APPROPRIATE SOLVENT AND BRUSH, CLEAN THE CARBON DEPOSITS FROM ALL THREADS AND INTERNAL SURFACES. WARM SOAPY WATER GOES A LONG WAY IF YOU CLEAN OFTEN ENOUGH.

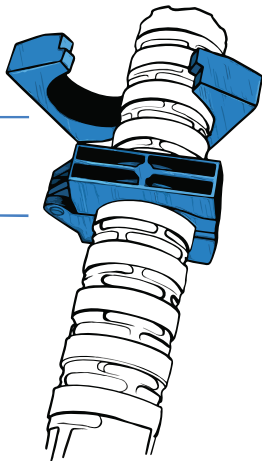
2. BE SURE TO CLEAN THE HOST FIREARM'S BARREL THREADS OF ANY FOULING PRIOR TO INSTALLING A SILENCER TO ENSURE PROPER ENGAGEMENT AND ALIGNMENT.

- **ERECT9R**
 - **1/2-28 PISTON**
 - **ASSEMBLY TOOLS (X2)**
- **USER MANUAL**
 - **FINE PRINT CARD**

THE **ERECT9R** COMES WITH 9 ALUMINUM BAFFLES FOR OPTIMAL SOUND REDUCTION. THE CHOICE IS YOURS... CHOOSE WISELY.

INCLUDED WITH THIS SILENCER ARE TWO TOOLS REQUIRED FOR ASSEMBLY AND DISASSEMBLY. THESE TOOLS INTERFACE WITH THE OUTSIDE FEATURES OF EACH **ERECT9R** COMPONENT AND CAN BE USED AS HAND TOOLS OR VICE BLOCKS AS NEEDED.

▲ FAILURE TO USE THE PROVIDED TOOLS WILL CAUSE DAMAGE TO THE COMPONENTS, BRING THEM OUT OF ALIGNMENT, AND PREVENT THEM FROM REASSEMBLING PROPERLY.

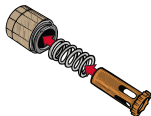


THE **ERECT9R** IS COMPRISED OF 8 UNIQUE PARTS.



- | | |
|---------------------------|--------------------------|
| A. FRONT CAP | E. ENCAPSULATOR |
| B. WIPE (OPTIONAL) | F. PISTON |
| C. BAFFLE (X9) | G. PISTON SPRING |
| D. BLAST BAFFLE | H. PISTON HOUSING |

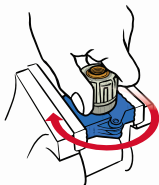
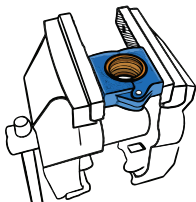
USING THE SUPPLIED TOOLS, A 2" CROW'S FOOT OR ADJUSTABLE WRENCH, AN 11/16" SOCKET AND TORQUE WRENCH; ASSEMBLE THE COMPONENTS AS FOLLOWS:



1. INSERT THE PISTON SPRING INTO THE PISTON HOUSING, FOLLOWED BY THE PISTON.

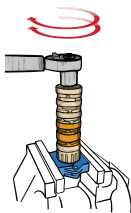
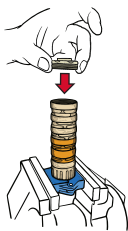
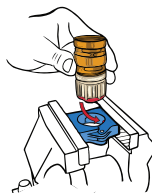
2. HOLD THE ENCAPSULATOR IN A VICE USING ONE OF THE INCLUDED TOOLS.

▲ THESE TOOLS ARE PLASTIC AND ARE USED FOR ANTI-ROTATION ONLY. TAKE CARE NOT TO CRUSH THEM IN THE VICE..



3. THREAD THE BOOSTER ASSEMBLY INTO THE ENCAPSULATOR BY APPLYING PRESSURE TO COMPRESS THE SPRING AND ALIGN THE PISTON'S TEETH WITH THE CORRESPONDING TEETH ON THE ENCAPSULATOR. HAND TIGHTEN.

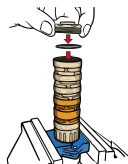
4. PLACE THE ASSEMBLED PISTON HOUSING INTO A CLOSED TOOL HELD IN A VICE. THE HIGHLIGHTED FEATURE OF THE HOUSING WILL INTERFACE WITH THE TOOL'S PINS.



5. THREAD THE BLAST BAFFLE INTO THE ENCAPSULATOR, FOLLOWED BY YOUR PREFERRED NUMBER OF ALUMINUM BAFFLES. THREAD THE FRONT CAP TO THE FORWARD MOST BAFFLE, AND APPLY 6-8 FT LBS OF TORQUE TO THE END CAP WHILE HOLDING THE PISTON HOUSING IN THE VICE.

6. IF YOU CHOOSE TO USE A WIPE, INSERT ONE INTO THE FORWARD MOST BAFFLE BEFORE INSTALLING THE FRONT CAP. ENSURE IT IS ALL THE WAY IN, BELOW THE INNER THREADS.

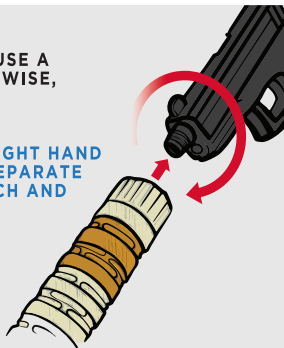
▲ WIPES RUIN ACCURACY AND WILL INCREASE BACK-PRESSURE. KEEP THIS IN MIND BEFORE KICKING IN OUR CUSTOMER SERVICE DOOR..



1. **RIGHTY TIGHTY. IF YOU CHOOSE TO USE A TOOL, USE THE PROVIDED ONES. OTHERWISE, HAND TIGHT'LL DO.**

▲ **THE ERECT9R SHIPS WITH A 1/2-28 RIGHT HAND THREAD PISTON. IF YOU PURCHASE A SEPARATE PISTON, BE SURE TO KNOW THREAD PITCH AND DIRECTION.**

2. **PERIODICALLY CHECK TIGHTNESS AND ENJOY... QUIETLY.**



▲ **BEFORE REMOVING ANY SILENCER FROM ITS HOST FIREARM, REMOVE THE MAGAZINE FROM YOUR FIREARM, MAKE SURE THE BOLT OR SLIDE IS LOCKED TO THE REAR AND THE FIREARM IS UNLOADED BY PERFORMING A PHYSICAL AND VISUAL INSPECTION OF CHAMBER AND MAGAZINE WELL. IF YOU JUST FINISHED SHOOTING, BE CAREFUL...THAT SHIT GETS HOT.**

1. **REMOVE THE SILENCER FROM THE HOST FIREARM.**

2. **USING THE PROVIDED TOOLS, UNTHREAD EACH OF THE COMPONENTS IN REVERSE ORDER IN WHICH YOU ASSEMBLED IT.**

▲ **THE PISTON HOUSING AND PISTON HOUSING COVER ARE PERMANENTLY ASSEMBLED. DO NOT TRY TO SEPARATE THEM.**



THESE GUYS WILL BUILD IT RIGHT. IF YOU GOT ANY ISSUES, LET ME KNOW AND I'LL WHIP THOSE PECKERHEADS INTO SHAPE.

REACH ME AT KEN@KEVINWASANACCIDENT.COM

- KEN



UNPOSSIBLE

MADE PROUDLY IN THE LIVE FREE OR DIE STATE

www.liveqordie.com



the_official_q2